



INSTRUCTION BULLETIN

No. 9016892
Machine: M17 / T17
Published: 02-2018
Rev. 02

NOTE: DO NOT DISCARD the Parts List from the Instruction Bulletin. Place the Parts List in the appropriate place in the machine manual for future reference. Retaining the Parts List will make it easier to reorder individual parts and will save the cost of ordering an entire kit.

NOTE: Numbers in parenthesis () are reference numbers for parts listed in Bill of Materials.

Installation instructions for **kit number 9016734**

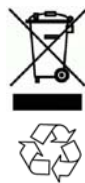
SYNOPSIS:

This kit contains the parts needed to replace the brake pedal assembly on M17 sweeper- scrubbers (serial numbers 00000- 10564, except machine 10562, updated brake assembly is already installed) and T17 scrubbers (serial numbers 00000- 11777). **T17 scrubbers only:** This kit also contains a new round hole plug to be used if the round hole plug is missing or if the old round hole plug is installed in the front drive wheel motor.

Please follow step-by-step instructions.

SPECIAL TOOLS / CONSIDERATIONS: NONE

(Estimated time to complete: Between 1.25 hours (if right angle drill or right angle drill adapter is used to drill hole) and 2.5 hours (if components are removed to access area to access / drill hole))



PROTECT THE ENVIRONMENT

Please dispose of packaging materials, used machine components such as batteries and fluids in an environmentally safe way according to local waste disposal regulations.

Always remember to recycle.

PREPARATION:

FOR SAFETY: Before leaving or servicing machine, stop on level surface, turn off machine, and remove key.

1. Place a chock both in front of and behind one of the rear wheels.

NOTE: Due to parking brake being disabled to install the new parking brake assembly, a chock must be placed both in front and behind one of the rear wheels to prevent the machine from moving while the parking brake is being replaced.

2. Remove the access panel from the steering channel. Set the access panel and all hardware aside. (Fig. 1)

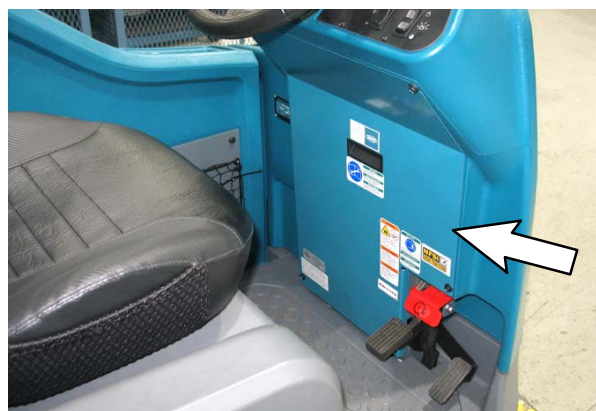


FIG. 1

INSTALLATION:

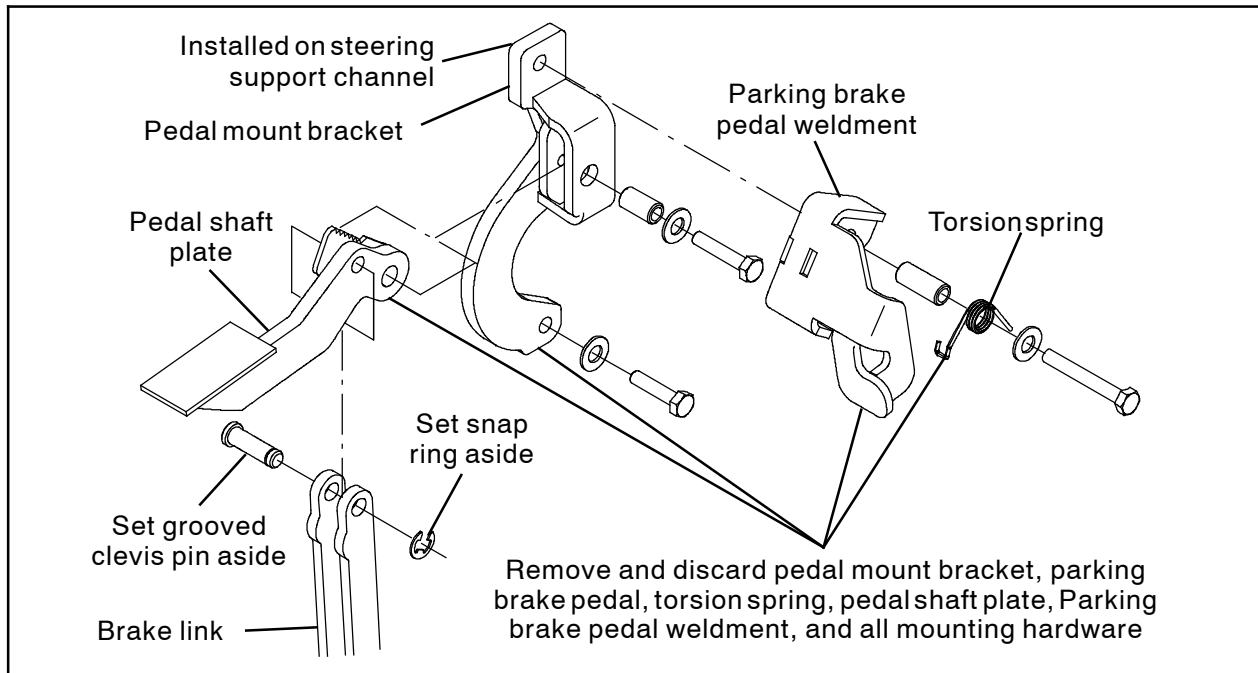


FIG. 2

1. Remove the grooved clevis pin and snap ring securing the pedal shaft plate to the brake link. Set the grooved clevis pin and snap ring aside. (Fig. 2)
2. Remove the pedal shaft plate, pedal mount bracket, parking brake pedal weldment, and torsion spring from steering channel weldment on the frame of the machine and the steering support channel. Discard all components and hardware removed in this step. (Fig. 2)
3. Remove the weldnut from the steering support channel. (Fig. 3)

NOTE: If necessary use a 6 in. grinding wheel to remove the weldnut from the steering support channel.

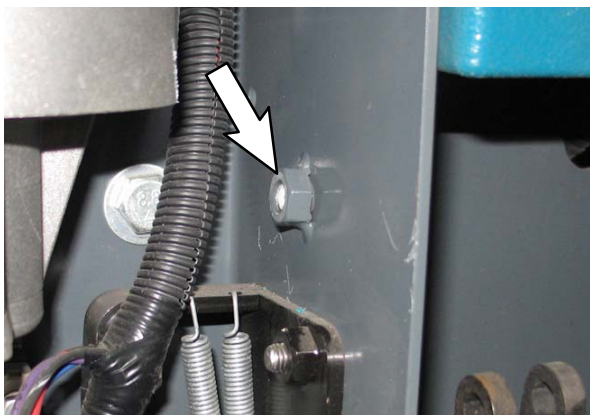


FIG. 3

4. Measure and mark where the 29/64 in. (11 mm) hole is to be drilled through the steering channel weldment on the frame of the machine, the steering support channel, and the propel pedal assembly. (Fig. 4)
5. Remove parts / components necessary to access / drill hole through the steering channel weldment on the frame of the machine, the steering support channel, and the propel pedal assembly marked in the previous step. (Fig. 4)

NOTE: It is not necessary to remove parts to access / drill hole through the steering channel weldment on the frame of the machine, the steering support channel, and the propel pedal assembly if either a right angle drill adapter or right angle drill is used to drill the hole.

6. Drill pilot holes as necessary through the steering channel weldment on the frame of the machine, the steering support channel, and the propel pedal assembly. (Fig. 4)
7. Drill a 29/64 in (11 mm) hole through the steering channel weldment on the frame of the machine, the steering support channel, and the propel pedal assembly. (Fig. 4)

NOTE: If location of 29/64 in (11 mm) hole is slightly off location drill the hole a drill bit size larger to allow for slight deviation in location.

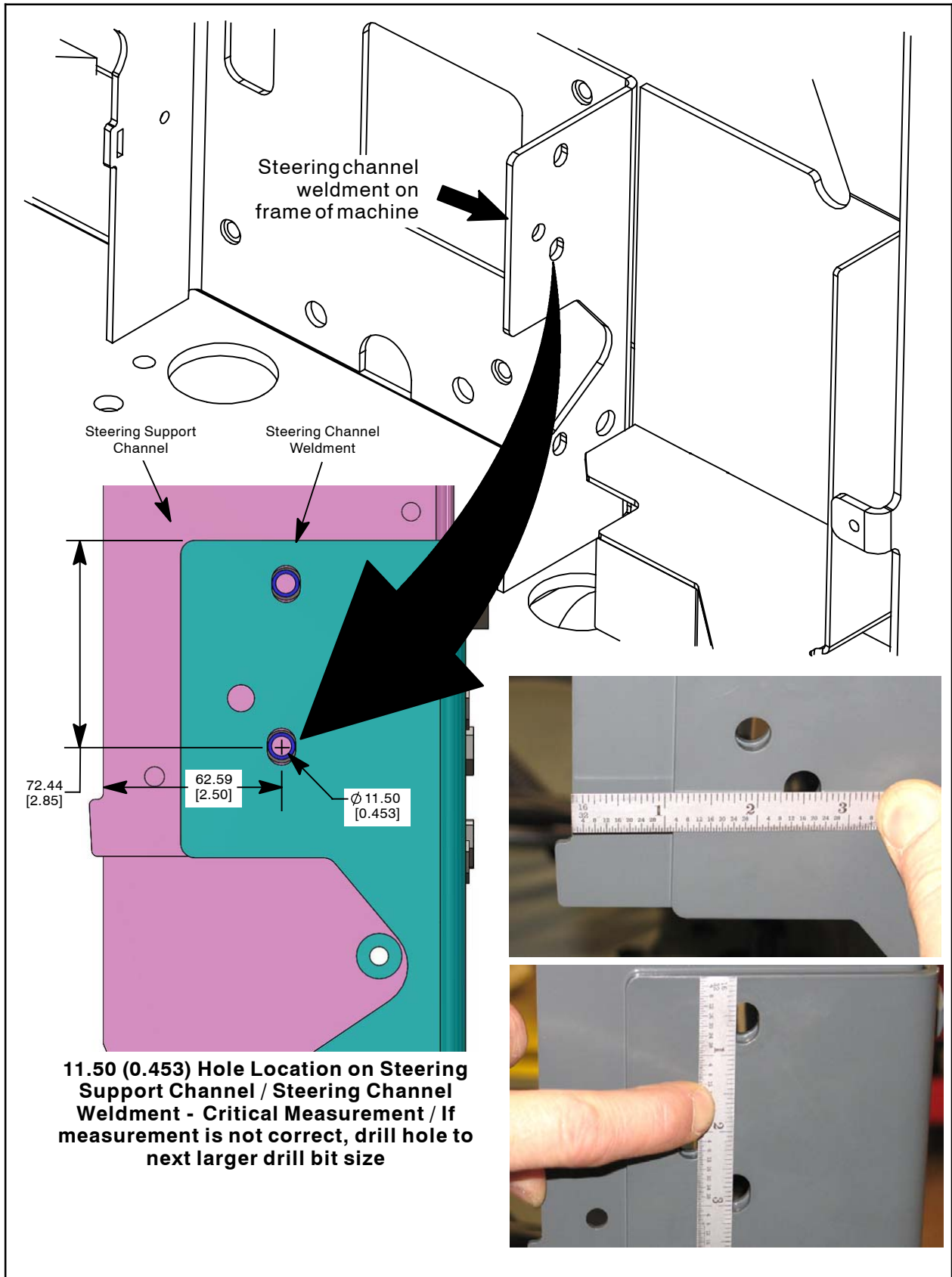


FIG. 4

- Remove and discard the top M8 hex screw and flat washer securing the propel pedal assembly to the machine. (Fig. 5)

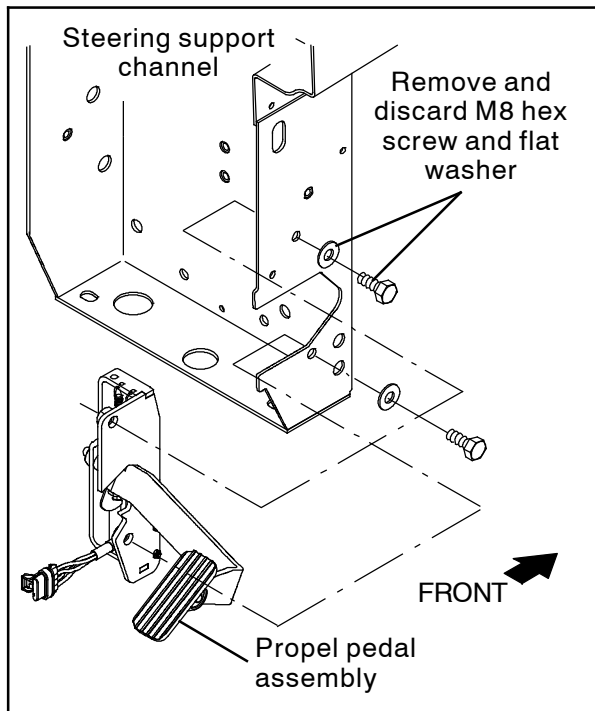


FIG. 5

- Position the new parking brake assembly onto the machine and use two M8 hex lock nuts (9) and two flat washers (8) to secure the parking brake assembly to the steering channel weldment on the frame of the machine, the steering support channel, and the propel pedal assembly. Torque hardware to 18.5 - 24 Nm (13.6 - 17.7 ft. lbs.). (Fig. 6 / Fig. 7 / Fig. 9)



FIG. 6

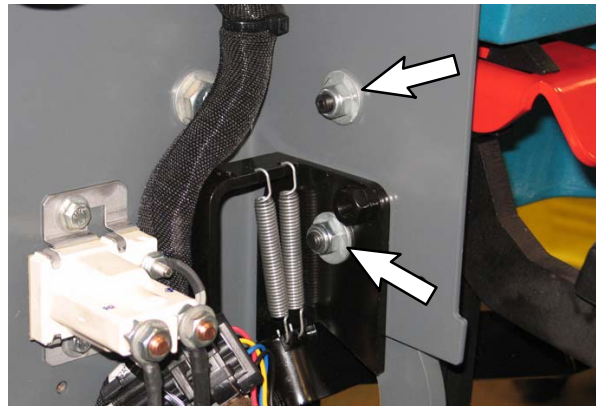


FIG. 7

- Use a M8 hex screw (14) and flat washer (8) to secure the parking brake assembly to steering channel weldment on the frame of the machine, the steering support channel, and the propel pedal assembly. Torque to 18.5 - 24 Nm (13.6 - 17.7 ft. lbs.) (Fig. 8 / Fig. 9)

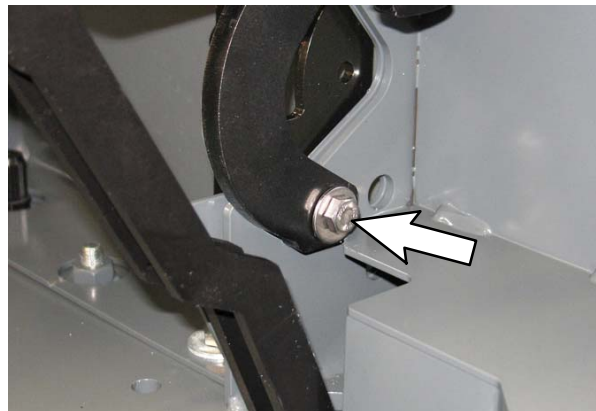


FIG. 8

- Use grooved clevis pin and snap ring to connect the parking brake assembly to the brake link. Note orientation / location of the grooved clevis pin / snap ring. (Fig. 9)
- Reinstall the access panel onto the steering channel.
- Remove the chocks from the rear wheels.
- Turn on and test the machine. Engage the parking brake. Place the machine in forward and reverse and lightly press the propel pedal. The machine should not move in either direction.

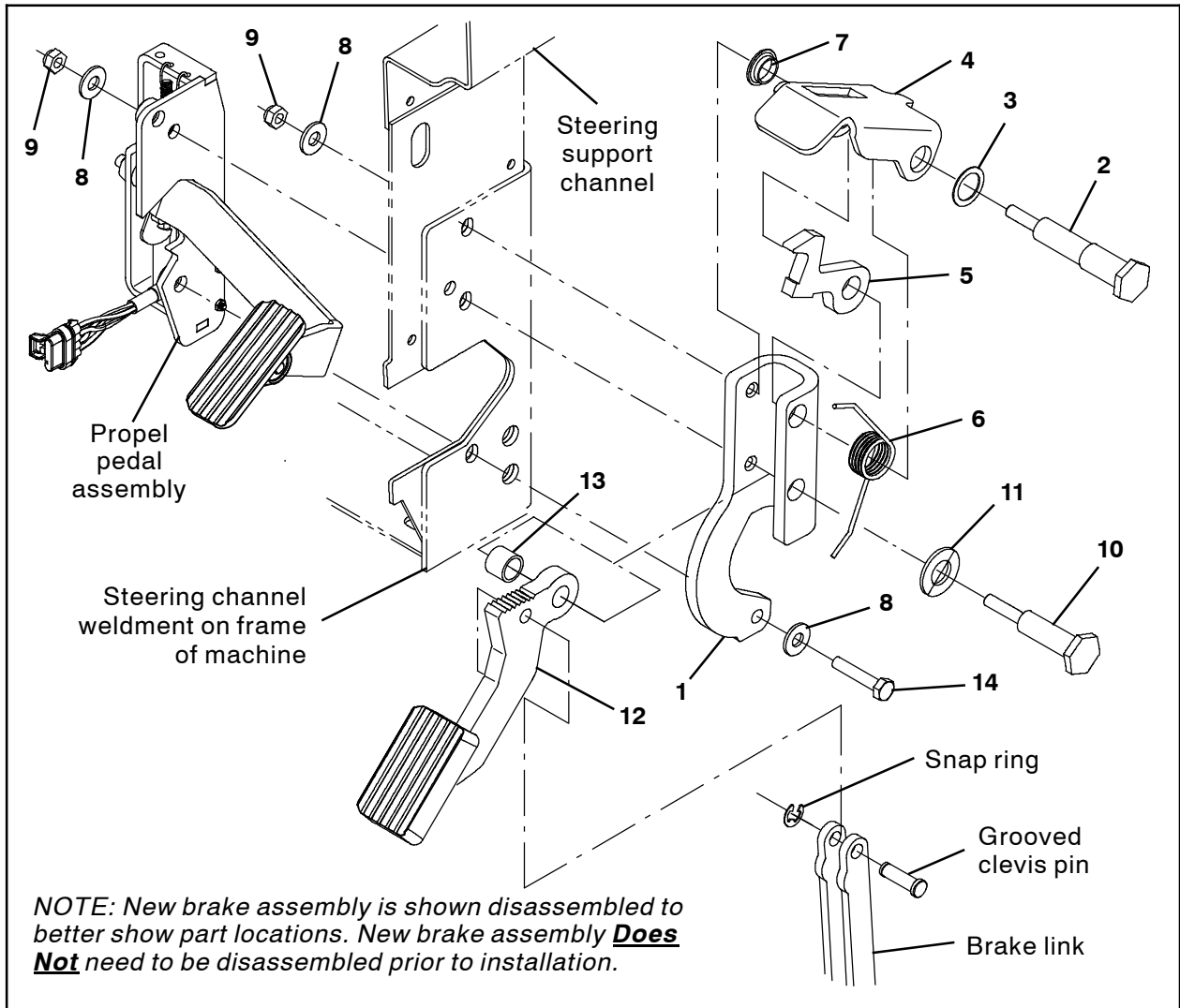


FIG. 9

15. **T17 machines only:** Check the front drive wheel motor for round plug. If the round plug is missing, install the new round plug (15). (Fig. 10 / Fig. 11)

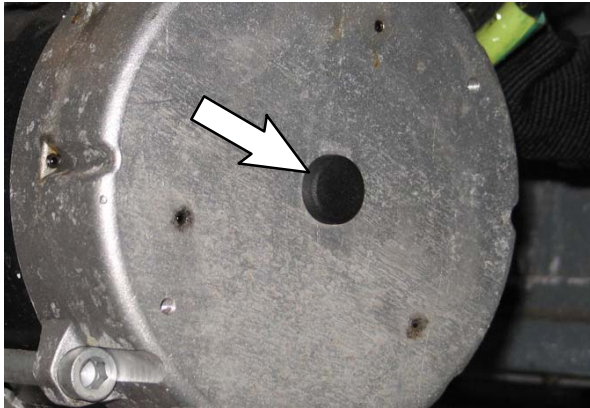


FIG. 10

If old round plug is installed, replace with new round plug (15). (Fig.10 / Fig. 11 / Fig. 12)

If the front drive wheel motor does not have a hole in this location, the hole plug does not need to be installed.



FIG. 11 - Old Round Plug



FIG. 12 - New Round Plug (15)

Bill Of Materials For Brake Kit, Replmt, Afmkt [T17/M17] - 9016734

Ref.	Tennant Part No.	Description	Qty.
1	1236066	Bracket, Mtg, Pedal, Painted	1
2	1234792	Pin, Spindle, Spring	1
3	630358	Washer, Flat, 0.75b 1.00d .03, Nyl	1
4	1230885	Pedal, Window	1
5	1230821	Stop, Lock, Pedal	1
6	1234554	Spring, Torsion, Brake	1
7	04843	Bushing, Flng, 0.63b 0.72d 0.25l	1
8	32491	Washer, Flat, 0.31, Std	3
9	08709	Nut, Hex, Lock, M8 X 1.25, NI	2
10	1234789	Pin, Mtg, M8 X 1.25 Thrd	1
11	15331	Washer, Flat, 0.62, SAE	1
12	1229005	Plate Wldt, Shaft, Pedal	1
13	830207	Sleeve, 0.65b 0.87d 0.6l, PI	1
14	59658	Screw, Hex, M8 X 1.25 X 35, NI, SS	1
15	1238292	Plug, Hole, Rnd 14mm Nyl	1

TENNANT COMPANY
P. O. Box 1452
Minneapolis, MN 55440-1452